



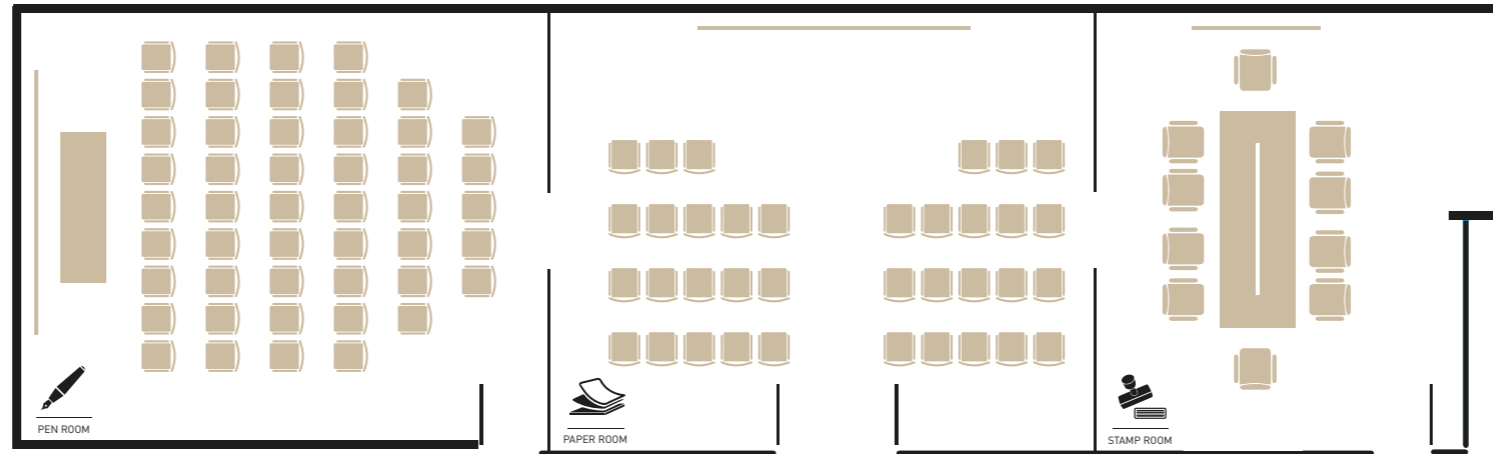
# THE COVENANT

## MEETING ROOMS



At SAINT TEN Hotel you will find the perfect setting for all of your meetings with special attention to details. Our unique meeting space that spreads on 110 square meters space offers a wide range of set ups such as business meetings, conferences, corporate events or presentations.

The Covenant Meeting Rooms feature 3 unique meeting rooms, tailor-made to meet the highest demands of business guests. All conference rooms can be adjoined and separated and are equipped with the latest technology such as overhead projector, interactive board, video conferencing and wireless internet.



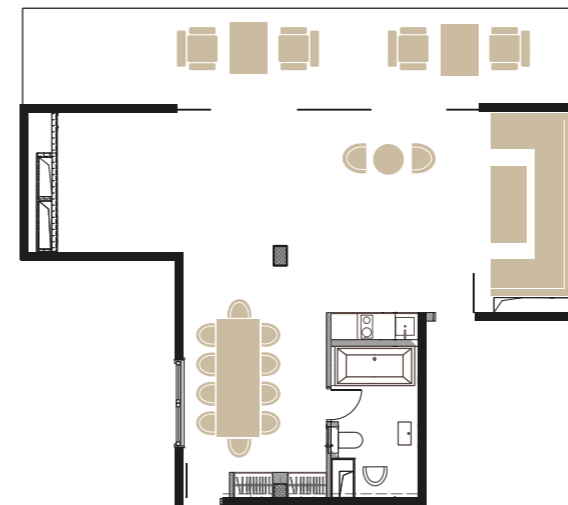
## EVENTS

Whether you would like to hold a catwalk fashion show, a cocktail, a gala dinner or special event, at Saint Ten Hotel you will find the perfectly designed space. Our luxury designed restaurant and lobby bar offer a wide range of ideas for your signature event.

Hold your event in our meeting spaces and our event managers will create an ideal environment and make your wishes and events become reality.

## Technical Equipment

- Projector
- Screen
- LCD TV Screen
- Interactive board
- Paper and pen
- Flipcharts
- Wireless Internet
- Speakers booth
- Video conference possibility
- Individual climate and light control



## MULTIFUNCTIONAL ROOM

Located on the 6th Floor with an open terrace our multifunctional room is not just a room, specially designed for both cocktails and board meetings or special tailored events such as private dinners or birthdays in a fully equipped suite. As a creative alternative for your events in this room you may also find a boardroom table, library and kitchenette.

Venue	m <sup>2</sup>	Length	Width	Height	Theatre	Classroom	Hollow Square	Banquet	U-Shape	Reception	Cabaret	Boardroom
VENUE 1 STAMP (BOARDROOM)	30	4.5	5.7	2.75	14*	15*	N/A	10	8	20*	N/A	10
VENUE 2 PEN	39	7	5.7	2.75	26*	21*	22*	20	16*	24*	10	10
VENUE 3 PAPER	40	7	5.7	2.75	28*	21	22	20	19	24*	10	12
THE COVENANT- STAMP & PEN & PAPER	110	18.7	5.7	2.75	99*	84*	58*	50	55*	110*	25	12+
VENUE 1&2	69	11.5	5.7	2.75	50*	39*	24*	30	22*	40*	15	22
VENUE 2&3	79	14	5.7	2.75	60*	52*	28	30	26	50*	15	26
MULTIFUNCTIONAL ROOM	72	11	4.5	2.5	13	N/A	N/A	N/A	N/A	30	N/A	10

\* maximum capacities